

Main results

First: Unemployment rates

Results of survey shows that (5281) individuals are unemployed and most of the unemployed at age group (15-29) and then decreases subsequent to the follow groups.

Table (2-1):Sample size distribution

category	Less than age of work	Unemployed	Employed	Non-Economically active	Total
4-0	13081				13081
9-5	2513	137	191	8745	11587
14-10		439	774	9690	10902
19-15		1150	2260	6749	10159
24-20		1225	3209	4074	8508
29-25		827	3772	2937	7536
34-30		512	3280	2383	6175
39-35		334	2952	1976	5263
44-40		226	2247	1594	4066
49-45		122	1452	1370	2944
54-50		127	1352	1629	3108
59-55		90	912	1324	2326
64-60		46	409	945	1400
65 and more		46	343	2213	2602
Total	15594	5281	23153	45630	89658
Unemployed		5281			5281
Employed			23153		23153
Less than age of work	15594				15594
Pupil				22346	22346
Housewife				18584	18584
Retired				1990	1990
Has income & not work				1312	1312
Other				1397	1397
Total	15594	5281	23153	45630	89658
Male	8028	3887	18444	15291	45651
Female	7566	1394	4709	30338	44007
Total	15594	5281	23153	45630	89658

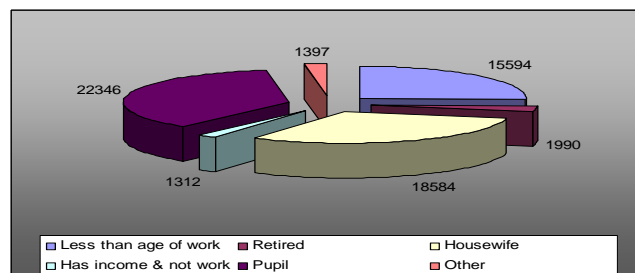


Chart (2-1): sample size distribute

Survey results showed that the unemployment rate among the population age (15) years and over was (17.5%) of the labor force and the rate of females more than males rate, where the unemployment rate for females (22.65%) and (16.16%) in males after the unemployment rate in 2005 was (17.97%).

Table (2-2) Unemployment rates for the years (2003-2006)				
Gender	2003	2004	2005	2006
Male	30.20	29.40	19.22	16.16
Female	16.00	15.00	14.15	22.65
Total	28.10	26.80	17.97	17.50

Survey results (table (3-1) indicate that governorate of Thi Qar is still at top of other governorates in the high unemployment rate exceeded (27%) for both genders but among females is far more than among males, so the rate of females are (44.42%) versus (24.74%) for males, followed by Nineveh and Al-Muthanna governorates at rate of unemployment (27.48%) and (22.94%), respectively, recording the highest rates of unemployment in the country.

The lowest rate of unemployment among the population age (15) years and over recorded in the governorate of Kirkuk (7.90%) for both genders, while the rate between males form (6.43%) and female (12.92%), followed by Wasit governorate in rate of unemployment reached (8.82%).

It may be the cause of these different rates from one region to another due to the increasing number of entrants to labor market and the demand for jobs in turn decrease in the provision of these opportunities and its decline due to the lack of security and stability, in addition to dissolved Iraqi army by the occupation authorities and the demobilization of many staff members, thereby impeding the development process and projects then disorders its balance from one region to another and this was reflected mainly on females more than between males, so that tables show overall the impact of increase female unemployment rates in all governorates, especially in the governorates where security conditions is difficult.

In comparison between governorates, generally survey results indicated that unemployment rates are concentrated in age group (15-24) in all governorates of the country and then begin a gradual decline in the subsequent groups.

Rates of unemployment in age group (15-24) in the governorate of Thi Qar reached (48.59%) registered the highest rates of unemployment for the mentioned age group in the country, followed by Nineveh governorate in rate of (43.49%), then Al-Qadisiaya governorate at rate of unemployment reached (34.89%), so it come at third step in terms of the highest rates of unemployment at the mentioned age group (tables form (3-5) to (3-34). Survey data also indicate growing crisis of unemployment in urban areas than in rural areas, and it should be noted that the unemployment rate among females in rural areas amounted (8.04%) that distinguished by high decrease compared to rate of female unemployment in the urban-Center areas which was (37.35%) and (36.80%) in the urban suburbs.

The reason for this is to compete of workers in these areas for employments between males and females together especially with the growing numbers of educated females, diversity their Scientific specializations and going of women to work in areas that provide them with economic benefit and social causes such as, wages, incentives, education and equal rates of pay in the public sector that governed by laws and equal regulations between men and women.

While in the rural areas by virtue of certain traditions that make many women work in the agricultural sector in low wages or they work in the households without pay and thus open the way for men to work in areas other than agricultural sector and provides employments for males more than in urban areas.

The percentage of males working by wages in the urban areas reached (61.7%) versus (2.3%) of unpaid household workers, (27.5%) working for himself and (8.6%) employer, while for females, the percentage of wage earners in the urban areas is (91.9%) of the total employees compared to (0.8%) only from those whom working without pay and (6.2%) who worked for themselves and (11.1%) employers.

The percentage of males who are in paid employment in the urban and rural areas is (39.8%) versus (21.5%) working for household without pay, while for females working by wages (7.9%) versus to (85.4%) worked in household without pay.

Table (2-3): Distribution of labor force as the process status (percentage)									
Environment	Working by wage		employer		Working for himself		Unpaid household worker		Total
	Male	Female	Male	Female	Male	Female	Male	Female	
Urban	61.7	91.9	8.6	11.1	27.5	6.2	2.3	0.8	100.0
Rural	63.8	82.8	8.0	2.2	25.2	5.7	3.0	9.3	100.0
Total	39.8	7.9	11.1	2.1	28.1	4.6	21.5	85.4	100.0

Unemployment among young people age (15-24) years

The unemployment rate among young people who are age group (15-24)years in approximately (30.28%) from the total labor force while the value of their share of unemployment reached (50.5%) of the total unemployed, which is clear that unemployment is concentrated in this age group , unemployed Women formed (62.5%) of the number of unemployed young people of the same group, and this rate higher than rate of contribution in the work force, which reached (18.6%) of the labor force that is nearly three times of its share in the labor force, which means that unemployment concentrated among youth group below the age of twenty five years and in the group of young women, may be that return to two main reasons, that are the intensity participation of women in these two groups ((15-19) and (20-24))compared with other groups of women and the lack of employment in the public sector, which was a perfect opportunity to work for women.

Table (2-4): The Relative distribution of unemployed by age group and Gender			
Age group	Male	Female	Total
19-15	27.8	15.1	24.4
24-20	25.3	28.1	26.0
Total	53.1	43.3	50.5
29-25	17.0	19.3	17.6
34-30	10.2	12.8	10.9
39-35	6.2	9.5	7.1
44-40	4.2	6.5	4.8
49-45	2.4	3.1	2.6
54-50	2.9	2.2	2.7
59-55	2.1	1.4	1.9
64-60	1.2	0.3	1.0
65 and more	0.7	1.7	1.0
Total	46.9	56.7	49.5
Grand total	100.0	100.0	100.0

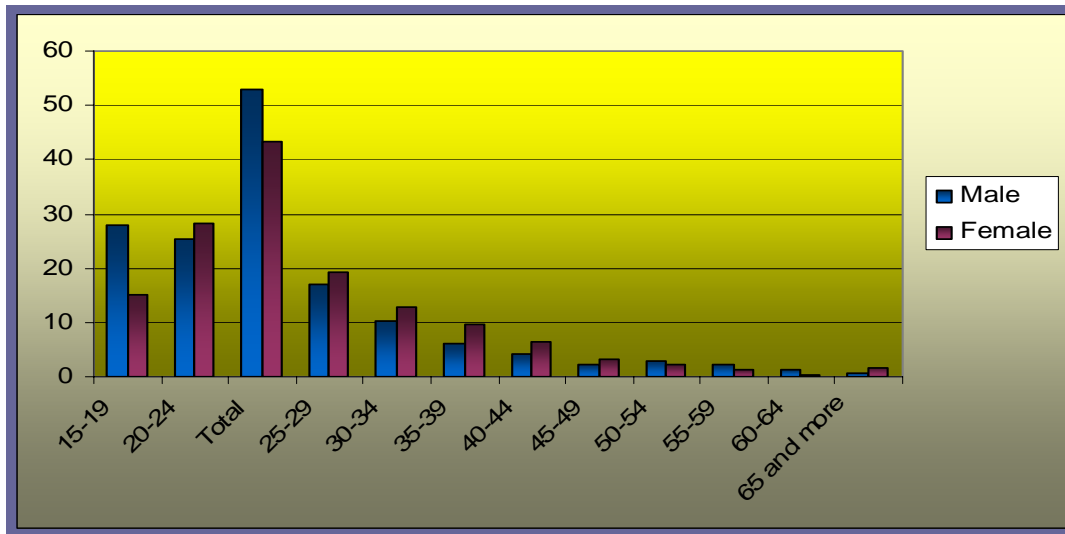


Chart (2-2): unemployed workers by age group and gender

Unemployment and Education

Graduate Unemployed who hold preparatory degree or below formed (80.5%) of the total unemployed persons, it is clear from the table the low unemployed rate in the educational categories which followed this group, This explains by opportunities given to these graduates as well as the commitment to the appointment of some graduates such as doctors, pharmacist... to increase the share of this category of unemployment means that a large proportion of unemployment who hold preparatory degree or below is connected with the share of this category of labor force and population.

Table (2-5) unemployed workers by educational status and gender (percentages)

Educational Groups	Mail	Female	Total
Illiterate	13.0	16.6	14.0
Read and write	17.7	13.0	16.5
Primary	36.2	20.0	31.9
Intermediate	12.0	10.4	11.5
preparatory	5.6	9.4	6.6
Total	84.6	69.3	80.5
Vocational schools	2.9	3.4	3.0
Vocational centers	0.2	0.0	0.2
Total	3.1	3.4	3.2
Diploma	5.4	12.4	7.3
Bachelor	6.8	14.8	8.9
Total	12.2	27.2	16.2
High diploma	0.0	0.1	0.0
Master	0.1	0.0	0.1
Doctorate	0.0	0.0	0.0
Highest specialty certification	0.0	0.0	0.0
Total	0.1	0.1	0.1
Grand total	100.0	100.0	100.0

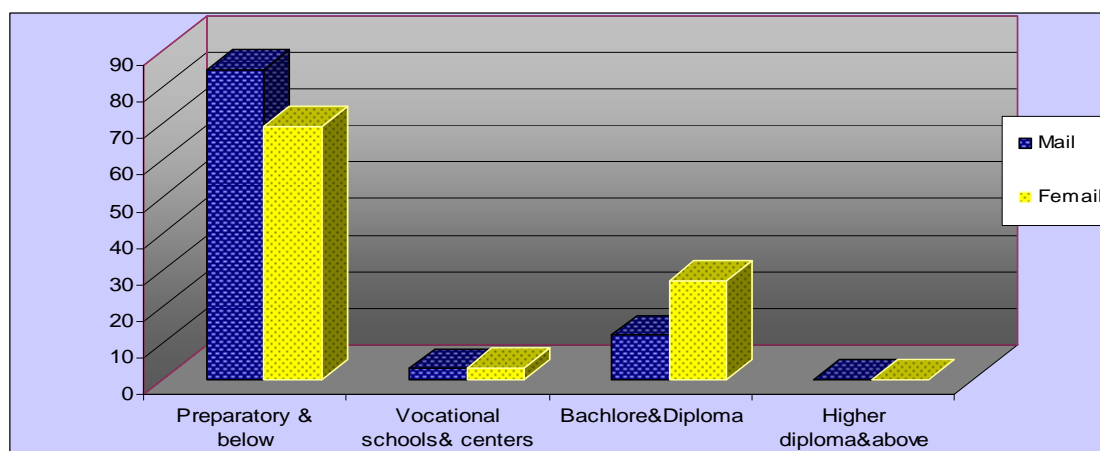


Chart (2-3): the unemployed as educational groups and gender

The emergence of a significant proportion of unemployment among those with low educational level qualifications may explain one of the main reasons for high unemployment rate in Iraq, as the inability of educational output to reduce a degree at acceptable level of compatibility and coherence with the labor market requirements to limit the availability and diversity of employment opportunities to the manpower especially if we take into account the current and contemporary requirements of labor market that increase complexity in terms of qualification requirements and competition, it is worth noting that unemployment rates as governorate increasing steadily with the educational status for who under preparatory certificate among the unemployed, so predictable that the situation of unemployment resulting from the low level of educational qualification among the unemployed, which greatly limits the availability of employment opportunities and diversity for them and this clearly from coincided rising unemployment rates for educational category below the preparatory certificate in the governorates (Nineveh, Sulaimaniya, Maysan, Al-Muthanna and Al-Najaf).

Table (6-2) : Number of Unemployed at age (15) years and more					
Governorate	Unemployed with preparatory qualification or below	Rate	Unemployed with qualification higher than preparatory	Rate	Total Unemployment
Nineveh	717	88.9	89	11.1	806
Kirkuk	43	66.5	22	33.5	64
Diala	155	79.6	40	20.4	195
Baghdad	682	74.1	238	25.9	920
Babylon	270	69.9	116	30.1	387
Kerbela	118	75.8	38	24.2	155
Wasit	75	66.7	38	33.3	113
Salah Al-Deen	221	78.7	60	21.3	281
Al-Najaf	176	81.1	41	18.9	217
Al-Qadisiya	166	79.1	44	20.9	210
Al-Muthanna	168	94.7	10	5.3	178
Thi-Qar	338	81.0	79	19.0	417
Maysan	176	90.7	18	9.3	194
Al-Basrah	198	72.1	77	27.9	275
Sulaimaniya	282	96.2	11	3.8	293
Total	3786	80.5	919	19.5	4705

Test the relationship between the unemployed and scientific qualification:

To explain the relationship between unemployment and educational status in the governorates the Stepwise Regression method has been used and the statistical analysis process represented by including separately the independent variables of the unemployed educational status (Illiterate, read and write, primary, Intermediate, Preparatory, high, vocational schools, vocational centers, Diploma, Higher Diploma, Bachelor, Master, Ph.D., The Highest specialty certification) also included on groups form, so that first group represented unemployed variable for the preparatory level or below (preparatory, Intermediate, primary, read and write, illiterate) while the second group of unemployed variable for level higher than preparatory (vocational schools, vocational centers, Diploma, Bachelor, Higher Diploma , Master, Ph.D., Highest specialty certification).

Regression analysis results supported the explanatory power for a single sample included the independent variable on the educational situation for who under preparatory certificate and elimination of other independent variables, coefficient of determination (R^2) amounted (0.979), that value refers to that about (98%) of the explanatory power of the sample explain the relationship between unemployment and educational status for who under preparatory certificate.

Dependent variable: total unemployed by governorates.

Independent variable: Total unemployed for educational group who under preparatory certificate by governorates

Table (2-7): regression analysis		
The Variable	coefficient of determination	Test (t)
Educational status for who have preparatory certificates or below	1.223	28.247
		Sig. (.000)
$R^2 = 0.979$		

Unemployment and scientific specializations

Economic activity as scientific specializations shows varied in the general average between males and females through reduction in economic activity rates for females compared to males where the rate of overall economic activity for males (78.3%) compared with (20.69%) for females, while its rates almost approximate between males and females in all scientific specializations, and this reflects the growing demand of educated women and compete with men in their scientific careers, but in terms of spatial distribution of rural and urban areas, where the rate of economic activity as scientific specializations in urban areas in general reached (45.9%) versus (57.35%) in the rural, but Unemployment rates differ where a differentiation case appear in the mechanism of employment for females than for males by high unemployment rates for females in all specializations compared with males and even in medical specialties.

Generally high unemployment rates in some important specializations such as computers, management and economy in its branches, languages, law and politics and decline in medical specializations and arts, this does not reflect that such specializations is not required in the labor market, but the possibility that opportunities which given to these graduates as well as the commitment to appointment of some graduates such as doctors and pharmacists, or may be the reason of that lack of outputs balance for these specializations with the market needs and therefore a surplus or lack of specializations.

Table (2-8): Rates of unemployment and labor force by scientific status, gender and environment										
Areas	Unemployment rates					Rates of Economic Activities				
	male	Female	Urban	Rural	Total	Male	Female	Urban	Rural	Total
Preparatory or below	16.50	22.37	21.28	12.91	17.56	75.76	15.68	38.74	55.69	44.81
Medical Specialties	4.12	12.15	5.53	10.53	6.32	94.99	84.39	91.61	93.05	91.83
Pharmacy	2.26	38.04	20.94	0.00	18.48	100.00	93.81	96.72	100.00	97.10
All Engineering branches	17.67	24.69	17.36	24.20	18.36	94.51	71.39	91.35	93.02	91.59
Sciences and pure sciences	10.46	20.91	16.46	7.52	15.39	94.28	90.78	92.11	96.32	92.59
Agricultural Sciences	18.11	47.25	23.89	16.51	22.07	98.15	86.20	95.65	98.51	96.34
Veterinary	13.40	37.24	18.73	18.40	18.65	92.92	87.42	92.19	90.09	91.65
Administrative and economics branches	17.30	40.08	24.55	27.66	24.95	91.49	68.02	80.44	94.06	81.98
All Arts branches	15.11	16.06	16.96	9.26	15.52	94.45	84.98	89.00	95.45	90.13
Arts and plastic Arts	3.77	13.09	6.62	0.00	6.23	99.70	67.59	87.97	100.00	88.59
Law and politics	13.54	30.25	17.65	21.07	17.95	88.81	85.93	89.20	77.56	88.03
Languages	11.09	21.89	17.27	11.97	16.60	89.48	91.76	89.43	100.00	90.63
Military Sciences	20.79	0.00	20.83	19.70	20.71	82.89	100.00	84.85	70.36	82.95
Computers	38.24	49.52	43.67	41.85	43.47	85.09	81.83	82.49	93.02	83.55
Other Areas	13.53	19.82	15.56	15.58	15.57	93.61	80.17	88.42	91.35	88.79
Total	16.16	22.65	20.20	13.17	17.50	78.30	20.69	45.90	57.35	49.72

Frustration

International Labor Organization (ILO) framework define different types of unemployment based on the relationship of individual with labor market and as we stated previously that the unemployment rate depends on the existence of three criteria at the same time that are (without work, ready to work, looking for work), whom be applicable to the first two conditions but does not apply the third condition, those are classified as "frustrated unemployed," that means they are wish to work and they are ready to work at the present time, but at the same time, they are not looking for work seriously because they have convinced that they will not find any opportunity to obtain a job, and if we divide the frustrated unemployed by gender we will find that unemployment rate high for both males and females who are engaged in the study, training and family responsibility.

Table (2-9): Relative distribution of unemployed who are not looking for work and as the reasons for not seeking a work			
The Reason	Males	Female	Total
Thought that there are no jobs	4.9	1.2	2.1
Tired of looking for work	1.8	0.8	1.1
Don't know how look for a job	0.8	0.3	0.4
The failure to find suitable work or waiting for a suitable work	3.6	0.5	1.2
Study, training and family responsibility	52.7	88.9	80.4
Has income and not working or illness and old age,...etc.	36.3	8.3	14.8

Millennium Development Goals

Goal 8: Develop a global partnership for development

Goal 16: Cooperation with developing countries to put strategies that give young people suitable and productive work

Indicator 48: Unemployment rates among persons aged (15-24) years, distributed by gender and total

Unemployment among young people in Iraq: male 29.68%, female 32.48%, total 30.28%

Second: Economic activity rates

The results of the survey indicates {table (3-4) }that rates of males participation in the labor force is relatively high compared to rates of women contribution, where the rate of economic activity reached (78.30% and 20.69%) respectively while overall labor force participation rate reached(49.72 %).

Average contribution of individuals from young men age group ages (15-24) amounted (42.01%), the share of female was (18.5%) only.

Geographical differences are minimal with regard to contributing in labor force, so according to survey data the highest rate of economic activity of the population registered at age 15 years or more in Babylon governorate (62.29%), followed by Wasit at rate of (54.32%) then Sulaimaniya governorate (50.89%) As for the rest of governorates have ranged between (50.68%) in Nineveh governorate to (45.49%) in Basrah, while contribution rate in the labor force is more differ between urban and rural areas and has varied between (46.17%)urban- Center, (45.52%) Urban-suburbs and rural areas is (57.35%) (table (3-2)) may be the reason for this differences due to the characteristics of population between areas such as age structure, level of education, ... etc, or because of differences in labor productivity (where the incentive to work greater if income was higher).

Concerning with the comparison between governorates, it should be noted that rise contribution rates in the economic activity of male compared to female contribution rates as both enter labor market in the youth groups but female go away at age earliest than male.

Survey results showed that the rates of economic activity focused on age groups (25-34) and (35-44) where the highest rate of economic activity recorded for the age group (25-34) in Babylon governorate reached (76.89%) then Salah Al-Deen governorate at rate of(66.80%) and Kirkuk governorate in (59.66%), while the highest rate of economic activity registered at the age group (35-44) in the governorate of Sulaimaniya reached (67.80%), followed by Wasit governorate at rate of (66.80%) then Al-Qadisiya governorate came in third degree at rate of (63.04%), also notes that economic activity rates begin to decline in the subsequent age groups for whole the country due to their inability to work because of age, while for women this decline begin at age smaller that indicating to the presence of whom have been paid out to them whether their children, or One of the family members.

Employment rate to the population

The ratio of workers to total population is a sign of economy capacity to create job opportunities and the importance of this index parallel to the importance of the unemployment rate since the survey results showed that the workers percentage from the workforce is (25.8%) and this rate is low in each of center and suburbs urban compared with rural, The reason for that to low rates of female participation in urban areas and relatively high in rural areas.

Table (2-10): Distribution of population by economic activity and environment (percentage)									
The Environment	employed	unemployed	Uneconomically Active					Other	Total
			pupil	Housewife	retire	Has income & not work	Under Work age		
Center urban	23.0	7.3	26.6	21.5	3.0	1.5	15.8	1.3	100.0
Center suburbs	23.7	5.1	26.6	22.1	2.5	1.6	16.8	1.5	100.0
Rural	30.3	5.1	21.9	18.9	1.2	1.3	19.4	1.8	100.0
Total	25.8	5.9	24.9	20.7	2.2	1.5	17.4	1.6	100.0

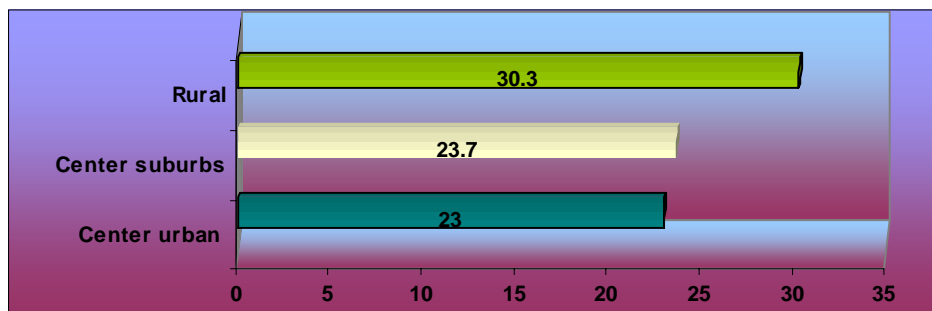


Fig (2-4): the proportion of the population by the employment environment

The economic activity rate for females may be has been affected by marital status and number of children, where has to be noted that the rates of housewives is (20.7%) of the total population while employed rate of the population is (25.8%) and unemployment (5.9%) also noted that the rates of housewives are very high when Family size is small (1-2) and (3-4) persons, it is noticeable that (97.6%) of housewives are dependent on their living resource on parents, and only (1%) of them are dependent on pension.

Table (2-11): The rate of economic activity as family size, gender, the rate of housewives							
Rate of activity and gender	Household size						Total
	2-1	4-3	6-5	8-7	10-9	11 and more	
Male	73.04	82.72	78.87	75.63	76.87	80.12	78.3
Female	20.16	19.03	20.39	19.95	22.22	22.53	20.69
Rate of housewife	33.2	25.4	19.8	18.8	19.4	21.4	20.7

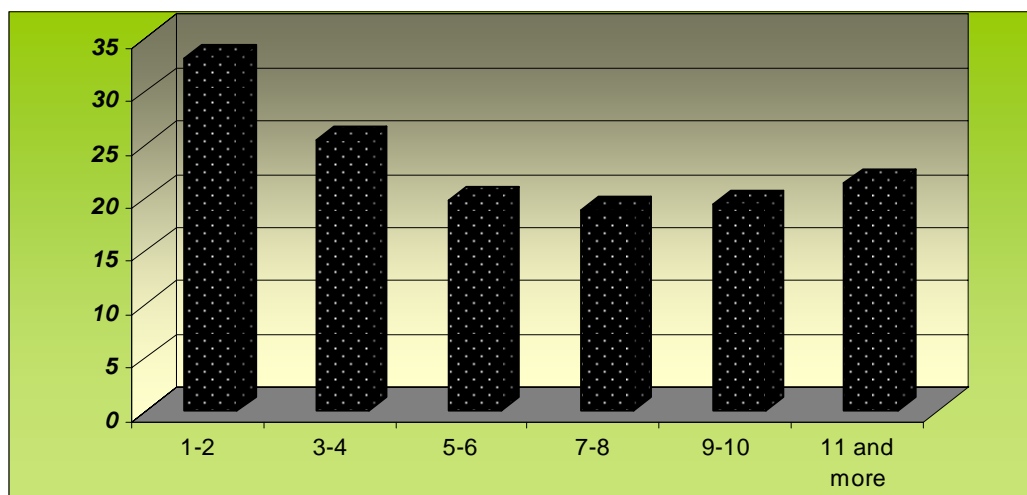


Chart (2-5): the proportion of housewives by household size

The survey results indicate that (69.7%) of the employees are working in the private sector primarily in young people category in the age group (15-19), the rate of young workers rise in the same age group with unpaid household that employed women be more inclined to.

Workers	Groups										Total
	19-15	24-20	29-25	34-30	39-35	44-40	49-45	54-50	59-55	64-60	
Private sector workers	92.9	74.6	65.1	65.0	62.6	62.7	61.1	60.5	66.5	68.2	69.7
unpaid household workers	43.0	26.2	17.0	12.4	8.5	8.0	8.3	10.2	9.0	5.5	18.5
who don't want their current work	25.2	19.3	12.8	14.1	13.3	7.9	10.9	4.6	11.5	5.6	15.8

The educational level of labor force

The overall outlook and expected future of the unemployment situation defined through the analysis of educational level of labor forces in Iraq, the indications point to that the largest proportion of the labor forces is in terms of the educational situation in the preparatory study level or below where this proportion amount (80.11%) which is very high and the proportions of labor forces for this groups ranging between (70.76% -89.24%) ,so if the educational status of the labor force continue as it is now, the possibility of turning some of the engaged labor force in the ranks of the unemployed due to the low of their education level and then weak their qualifying. It should be noted that the high rates of employed with low scientific qualify is concentrated in young people group aged (15-24) years) table (3-23) (This increases the predictability of the young people employment have low scientific qualified compared to other age groups.

Table (2-13): Employed aged 15 years and more hold preparatory qualification or higher as the governorate (percentage)					
The Governorate	Workers: have preparatory or below	percentage	Workers: Higher than preparatory	percentage	Total of Workers
Nineveh	1809	85.03	319	14.97	2128
Kirkuk	596	79.45	154	20.55	750
Diala	642	74.59	219	25.41	861
Baghdad	3801	77.15	1126	22.85	4927
Babylon	1982	84.15	373	15.85	2355
Kerbela	511	74.80	172	25.20	683
Wasit	980	84.07	186	15.93	1166
Salah Al-Deen	1072	85.88	176	14.12	1248
Al-Najaf	743	79.64	190	20.36	932
Al-Qadisiya	692	81.87	153	18.13	845
Al-Muthanna	533	89.24	64	10.76	597
Thi-Qar	840	77.65	242	22.35	1082
Maysan	686	81.29	158	18.71	843
Al-Basrah	1367	70.76	565	29.24	1931
Sulaimaniya	1520	82.72	318	17.28	1838
Total	17774	80.11	4414	19.89	22188

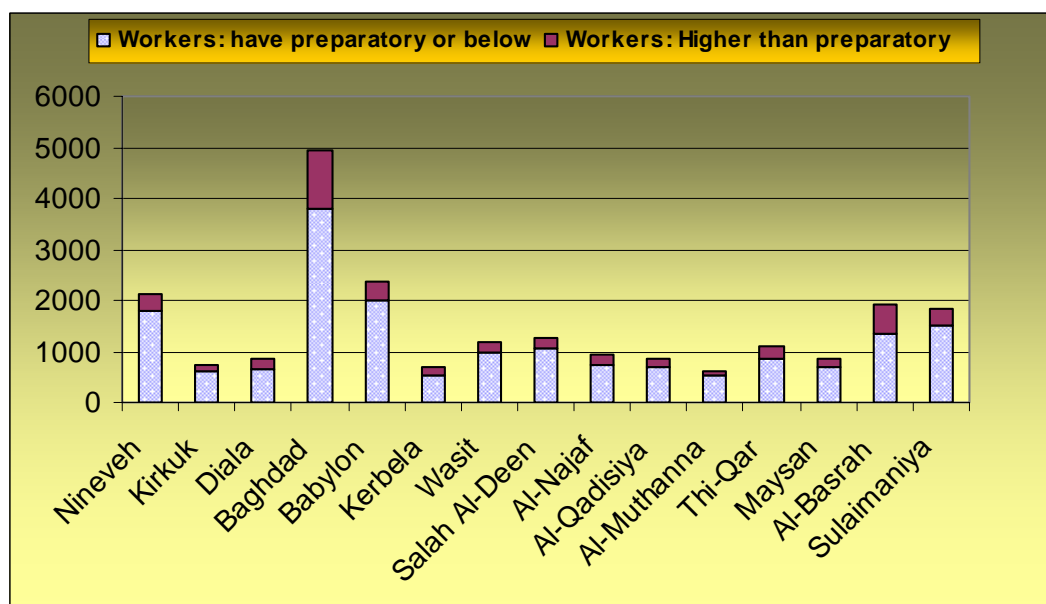


Chart (2-6): the workers with qualify higher and lower than preparatory certificate as the governorate

Structure of occupations

Labor force analysis by occupations reflects the pattern of structural labor market, which occupations focused on professional sectors do not require high skills such as people working in terms of sales their rate in the trade and services reached (95.6%) and workers in agriculture and animal husbandry in the agriculture activity reached (98.4%) and workers in production of manufacturing activity and construction is (50.5%).

The Main occupations and activities	agriculture	Manufacturing and construction	Trade and services	public administration, education and health	households and organizations outside territorial authority	Total
Specialists, technicians and their associates	1.5	6.9	9.2	82.1	0.3	100.0
Legislative, chairmen, administrators and managers	3.4	16.6	37.8	42.2	0.0	100.0
Employees, executives, clerks , their associates	2.4	16.2	21.0	60.1	0.3	100.0
Workers in sales	1.8	2.3	95.6	0.1	0.2	100.0
workers in services	0.8	0.6	0.8	0.2	0.0	100.0
Agriculture workers and animal husbandry	98.4	0.6	0.8	0.2	0.0	100.0
production Workers, their associated and equipment operators	0.5	50.5	47.4	1.6	0.0	100.0
Total	27.5	18.3	31.5	22.6	0.1	100.0

Working hours

There are clear differences in social type with respect to working hours, where females rate who work less than (35) hours per week is(47%) versus (26%) for males and the reason for the differences in the activities to some extent whereas the education sector (30 Hours) is the economic activity which employs the largest part of female workforce.

Characteristics	less than 20 hours a week	less than 35 hours a week	35 hours and more	Total
Male	9	30	61	100
Female	32	43	25	100
Urban Center	9	25	66	100
Urban suburbs	8	31	61	100
Rural	19	37	44	100
Total	15	33	53	100

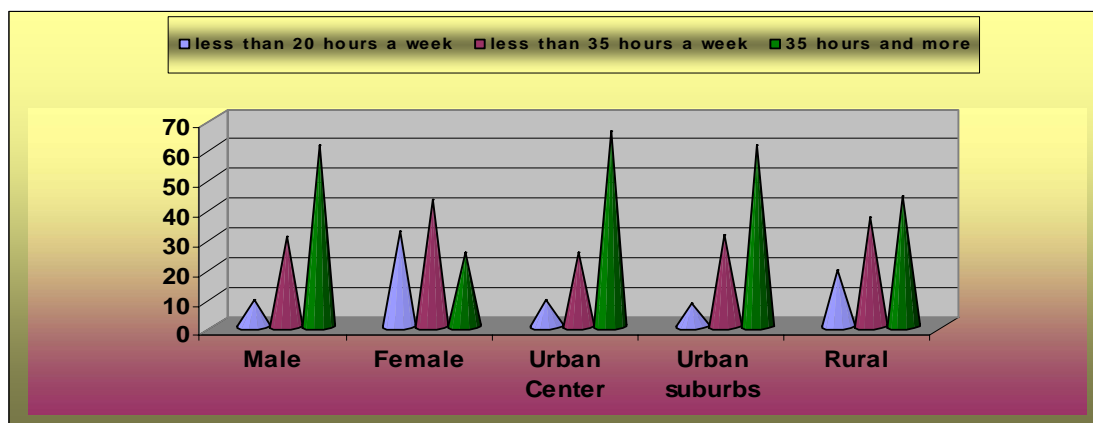


Chart (2-7): weekly working hours by gender and the environment

Millennium Development Goals

Goal 3: Promote gender equality and the empowerment of women

Goal 4: Eliminate gender inequality in primary and secondary education preferably by 2005 and given to all levels of education no later than 2015

Indicator 11: women's share of paid employment in non-agricultural sector

Employment rate of women in paid non-agricultural sectors in Iraq: 15.3%

Third: Under-employment

International Labor Organization defines the under-employment, those who are working but they want to get more work or other type of work its rate of work hours less than 35 hours a week and would like to do more work.

According to the results of survey there are (10.38%) of workers under this employment classification, it is normal that the spreading of under-employment between males more than females because of the numbers of the employed male workers more than the number of women.

The under-employment Spread between who have primary education or less than the primary, which means that there are many people looking for job and those who accept a partial work if offered.

Table (2-16): Under-employment rates by gender and educational level

Educational Status	Male	Female	Total
Illiterate	11.75	2.60	8.61
Read and write	12.94	2.84	10.91
Primary	13.41	2.76	12.20
Intermediate	10.57	9.15	10.49
Preparatory and more	11.17	2.49	9.01
Total	12.20	2.83	10.38

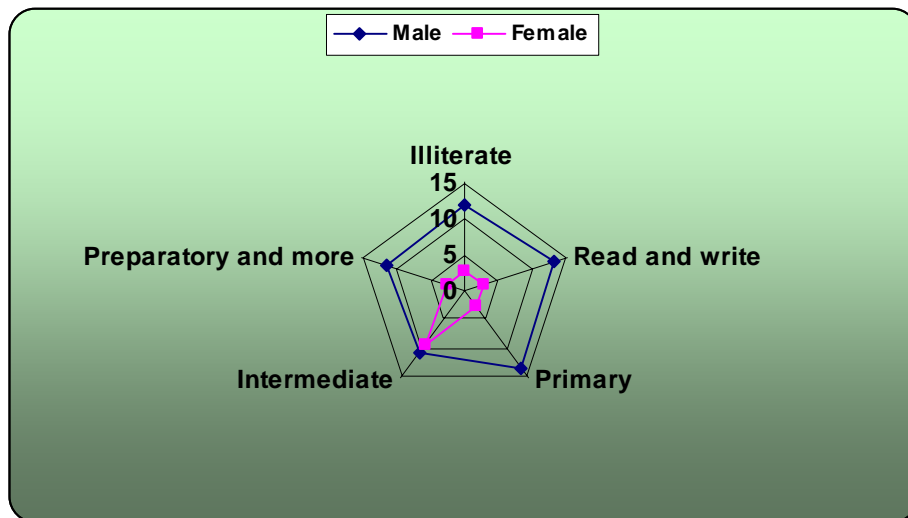


Chart (2-8): under-employment rates by gender and educational level

Forth: child labor

According to results of the survey there are (19987) individuals at age group (6-14) years have been a series of questions concerning type of work practiced by the child, also including paid or unpaid economic activities for someone else.

Table (2-17): employment of children aged (6-14) by activity and nature of work (percentage)				
Activity and nature of work	Work by hire	Employer	Work for himself	Unpaid household worker
Agriculture, Hunting & Forestry	4.1	0.8	3.8	91.2
Fishing	44.1	7.9	35.9	12.0
Manufacturing	60.0	9.5	0.0	30.6
Construction	76.1	0.0	12.1	11.8
Wholesale and Retail Trade and Repair of Motor Vehicles	32.5	3.9	23.8	39.8
Hotels and Restaurants	64.5	0.0	0.0	35.5
Transport, Storage & communication	58.1	0.0	33.8	8.1
Public Administration, defense and Compulsory Social Security	40.2	0.0	46.6	13.2
Community service activities and other social and personal services	85.9	0.0	11.2	3.0
Permanent	10.8	0.6	5.7	82.9
Provisional	24.5	0.5	6.2	68.8
Non-regular	15.8	2.4	7.0	74.7

The results show that (83. %) Of children work in household without pay and permanent, (24.5%) of them in temporary paid work and (91.2%) of them work in agriculture, fishing

and forestry without pay.

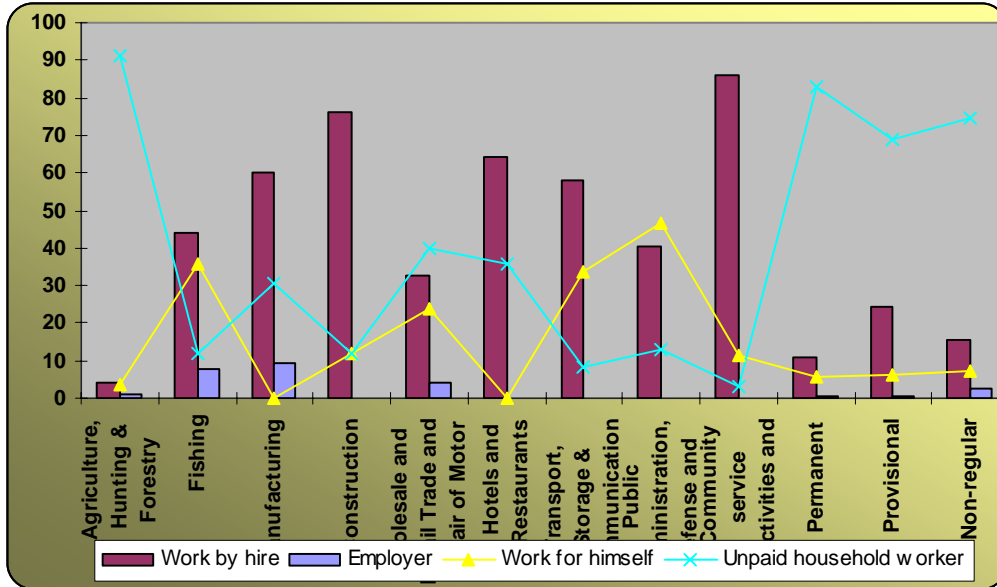


Chart (2-9): child labor, as the nature of work and economic activity